

## Vibration sensors

Our extensive offering of high-performance Wilcoxon Research® vibration sensors includes

- › Hazardous area-certified
- › Velocity output
- › Low/high frequency
- › 4-20 mA output
- › Low-power, low-voltage
- › High isolation
- › Triaxial sensors
- › High-temperature
- › Radiation-resistant
- › Dual-output vibration and temperature
- › Underwater

## Cable assemblies

Cable assemblies should be selected based on the sensor being used and plant conditions. A variety of rugged cable and connector options are offered for permanent or walkaround applications.

### Popular cable

- › Twisted pair, shielded
- › Coaxial
- › Low-noise coaxial
- › Multi-conductor
- › Underwater
- › Data collector

### Connectors

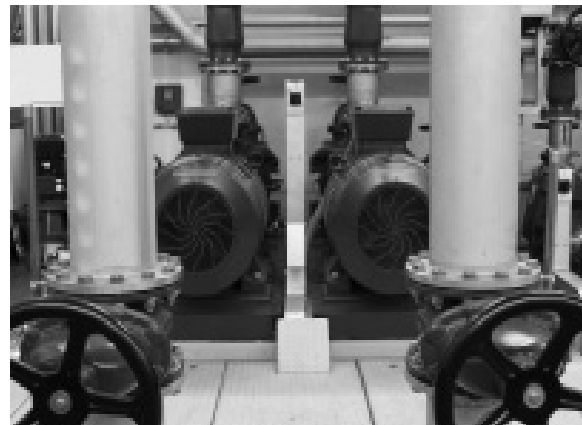
- › MIL-5015 style
- › BNC
- › M12 style
- › Microdot
- › LEMA
- › Specially built

## Instrumentation

- › Portable vibration reference source
- › Handheld vibration meters
- › IR thermometers
- › Transmitter and alarm modules
- › Power and signal conditioning

## Mounting hardware

- › Magnetic bases
- › Isolators
- › Fin mounts
- › Triaxial cubes
- › Adaptor studs
- › Adhesives and greases



## Solutions enclosed

Unparalleled time savings and improved reliability with new generation of vibration monitoring enclosures



## Vibration monitoring

A new generation of Vibralink enclosures has a range of brand new features, exclusive to Meggitt, that give them unparalleled reliability, flexibility and compatibility as well as saving precious data-collection time.

Vibralink enclosures house cable runs for up to 48 permanently-mounted accelerometers, detecting vibration in rotating machinery – essential for knowing if the machinery is suffering from misalignment, imbalance or wear.

Four new features make the Vibralink enclosures, which come with a lifetime warranty, stand out from competitive models:

1. The data-ready light illuminates when the sensor data can be collected, saving up to seven seconds' waiting time per channel and up to one hour per typical route. It makes the entire monitoring system highly reliable, eliminates data uncertainty and reduces route collection time.
2. The enclosures have 66% more interior space. Increased visibility makes wiring easier and reduces the risk of sensor and channel miswiring.
3. They are compatible with all IEPE sensors, including dual output and triaxial models.
4. The boxes have pre-drilled and pre-sealed cable holes ensuring the enclosures stay water- and dust-proof and retain their NEMA waterproof rating.

## Switchboxes

### Customized for every application

- › Base box: 6, 8 or 12 channels
- › Expandable box: 12, 24, 36 or 48 channels
- › Stainless steel or NEMA 4X rated fiberglass boxes
- › Online connectivity for continuous monitoring
- › Dual-output models for use with IEPE sensors which contain integrated temperature probes
- › Triaxial sensor supported models with individualized terminal blocks or M12 connectors

### User-friendly design and layout

- › 66% more interior space for easy wiring
- › MIL-5015 and BNC connectors ensure compatibility with most portable data collectors
- › Organized terminals reduces overstressed cabling



## Data-ready light

Unbeatable accuracy, faster readings.

Patent-pending LEDs illuminate when BOV levels have stabilized and reliable data can be collected.

Save up to **seven seconds** per channel, up to **one hour** per typical route.



## Termination junction boxes

Low-cost, compact CB series enclosures include front panel BNC connectors for easy usage with data collectors. Models are available for two- or four-channel applications.

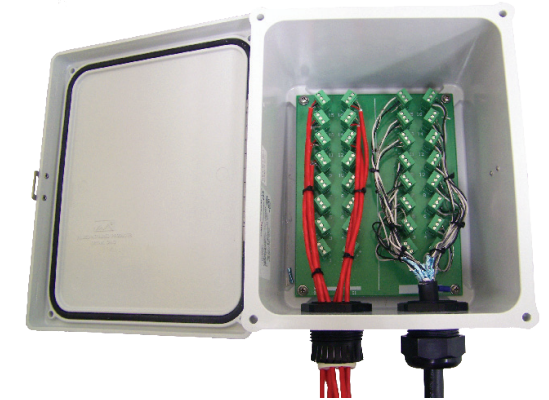
- › Rated for indoor applications
- › Cap protectors prevent dust and water entry
- › Triaxial sensor-compatible models (CBT)
- › Convenient access to remote sensors



## Reduction boxes

The RB series provides a safe and convenient termination for up to 32 channels. Single-channel cables are converted to a multi-conductor cable routed to remote online monitoring systems.

- › Eliminate costly cable runs
- › Organized terminals for easy wiring
- › Rated for indoor and outdoor applications



## Transmitter enclosures

Spacious iT enclosures offer a DIN rail for easy mounting of signal conditioning, alarm and power supply modules. Alarm modules can be configured with programmable relay trip levels for around-the-clock monitoring.

- › Ideal for setting up machine specific monitoring systems on balance-of-plant equipment
- › Single and dual rail models available
- › Clear front panel model for easy viewing and operation confirmation

