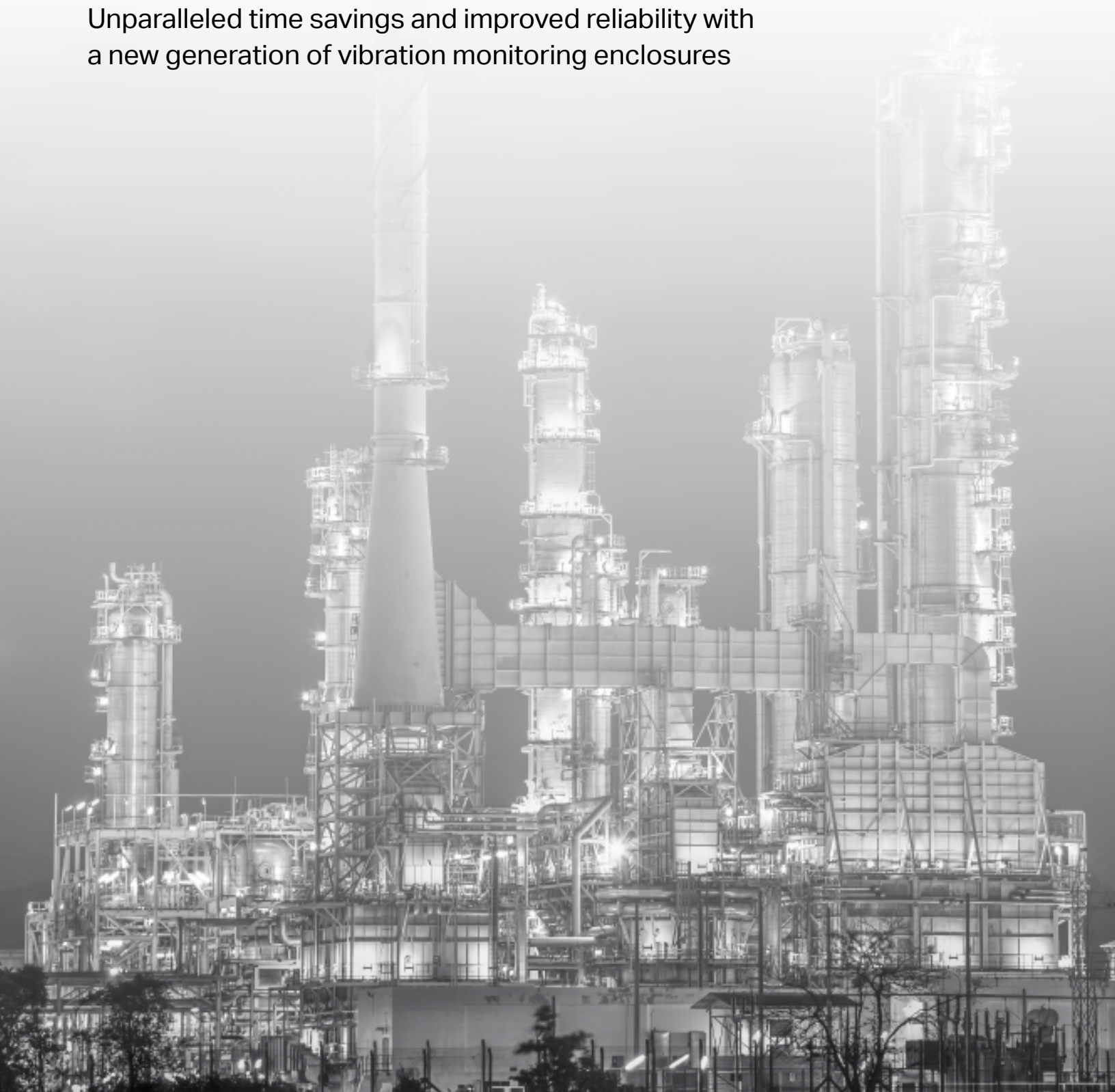


## Industrial enclosures

Unparalleled time savings and improved reliability with  
a new generation of vibration monitoring enclosures



# Enclosures

Designed with the user in mind, enabling quick and safe data acquisition in the harshest industrial environments.

## VibraLINK® (VL) series

### VLS and VLD enclosures

VLS and VLD switchboxes allow the user to choose between single or dual output and feature an industry-first data ready LED that indicates BOV levels have stabilized. Decrease active collection time, eliminate ski-slope data and increase efficiency.

- Base or expandable enclosure size for up to 48 channels
- Compatible with single- or dual-output IEPE sensors
- Online connectivity for continuous monitoring
- Organized terminals for clean cable runs
- NEMA 4/4X and IP66 ratings
- Customizable cable access holes
- 55% more interior space
- Increased noise immunity
- Lifetime warranty



Base size, 12-channel fiberglass VLS enclosure



Expandable, 24-channel stainless steel VLS enclosure



#### FEATURING

Industry-first data ready light for more reliable and efficient data collection.

VLS / VLD configuration options		
<b>X</b>	<b>S:</b> single output	<b>D:</b> dual output
<b># of channels</b>	6, 8, 12	12, 24, 36, 48
<b>Y (inches)</b>	<b>B</b> = 10 x 8 x 6	<b>E</b> = 20 x 16 x 8
<b>a</b>	<b>F:</b> fiberglass <b>S:</b> stainless steel	
<b>b</b>	<b>C:</b> conduit <b>G:</b> cable grip	
<b>cc</b>	<b>N:</b> no online connectivity <b>OC:</b> conduits <b>OG:</b> cable grips <b>OP:</b> removable plugs	
<b>d</b>	<b>S:</b> screw <b>Q:</b> quickconnect	

### HOW TO ORDER

**VL** X # Y **a - b - cc - d**

- X**  Choose single or dual output
- #**  Select number of channels
- Y**  Choose size

- a**  Material
- b**  Cable interface
- cc**  Online connectivity
- d**  Terminal type

# VLL enclosures

Wilcoxon's new VibraLINK Lite (VLL) enclosures are a cost-effective solution where simplicity of design fulfills your requirements. With many of the same configurable features of VLS and VLD models, VLL enclosures can be tailored to a variety of industrial applications. Visit [buy.wilcoxon.com](http://buy.wilcoxon.com) to see all VLL model options or for more information.

## HOW TO ORDER

Channels	Cable interface	N: no online connectivity
6, 12, 24, 36, 48	<b>C:</b> conduit <b>G:</b> cable grip	<b>S:</b> screw terminals

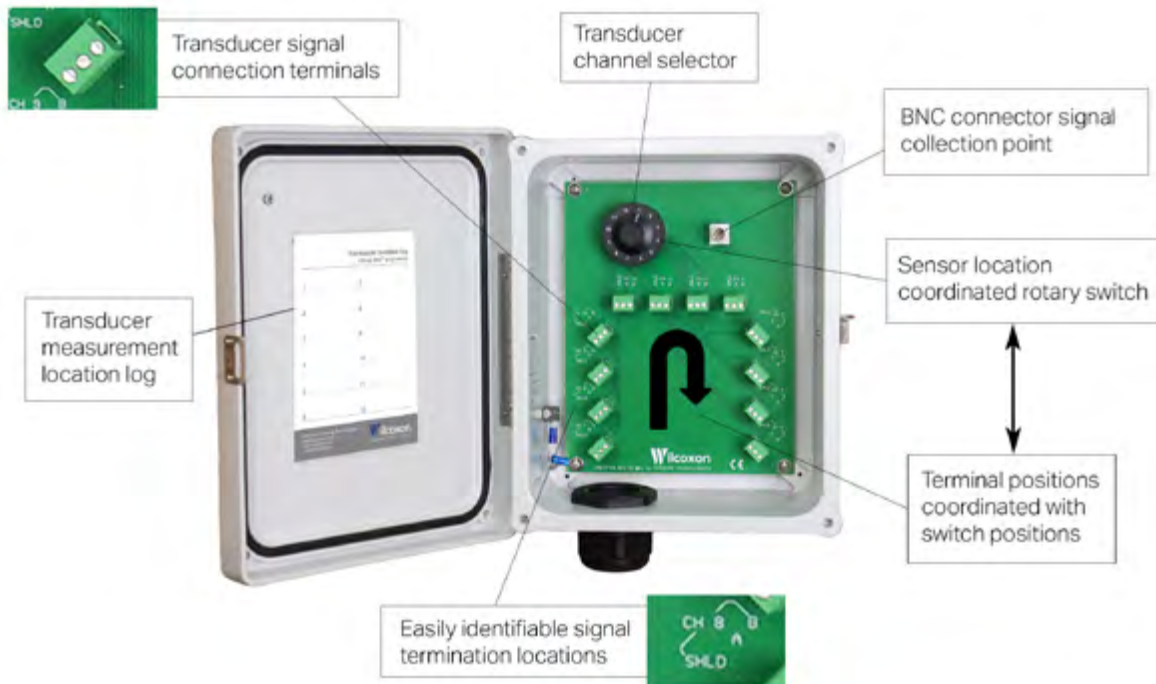
  

<b>VLL</b>	<b>#</b>	<b>Y</b>	<b>a - b - N - S</b>
	<b>Size</b>	<b>Material</b>	
	<b>B:</b> 10x8x4 <b>E:</b> 20x16x8	<b>F:</b> fiberglass <b>S:</b> stainless steel	



Base size, 12-channel fiberglass VLL enclosure

## Innovative circuit board design



Need technical assistance? We're here to help.  
Visit [wilcoxon.com](http://wilcoxon.com), call us at +1 (301) 330-8811 or email [info@wilcoxon.com](mailto:info@wilcoxon.com).



## VLT triaxial enclosures

VLT models offer simpler configuration and are designed for use with triaxial sensors.

- 6 channels
- Stainless steel or fiberglass housing
- Cable grips or M12 connectors (for compatibility with data collectors)
- NEMA 4/4X rated for harsh industrial environments



## Cable termination boxes

Low-cost, compact CB series enclosures include front panel BNC connectors for easy usage with data collectors. Models available for two- or four-channel applications.

- Rated for indoor applications
- Cap protectors keep out water and dust
- Triaxial sensor-compatible models (CBT)



## Reduction boxes

RB series reduction boxes provide a safe and convenient termination for up to 32 channels. Single-channel cables are converted to a multi-conductor output cable routed to remote online monitoring systems.

- Safely eliminate costly cable runs
- Organized terminals for easy wiring
- Rated for indoor and outdoor applications



## Transmitter enclosures

iT series enclosures include a DIN rail for easy storage of signal conditioning, alarm and power supply modules. Alarm modules can be configured with programmable relay trip levels for around-the-clock monitoring.

- Compatible with iT transmitters and alarm modules
- iT051 houses up to seven modules, iT052 houses up to 25 modules
- Clear front panel model for easy viewing and operation confirmation



## Vibration sensors

With over 60 years of experience developing reliable, high-performance products, Wilcoxon has an extensive offering of vibration sensors, including:

- Hazardous area certified
- Velocity output
- Low- / high-frequency
- 4-20 mA output
- Low-power, low-voltage
- High isolation
- Triaxial sensors
- High-temperature rated
- Radiation resistant for nuclear applications
- Dual output vibration and temperature
- Integral cable (submersible)



## Cable assemblies

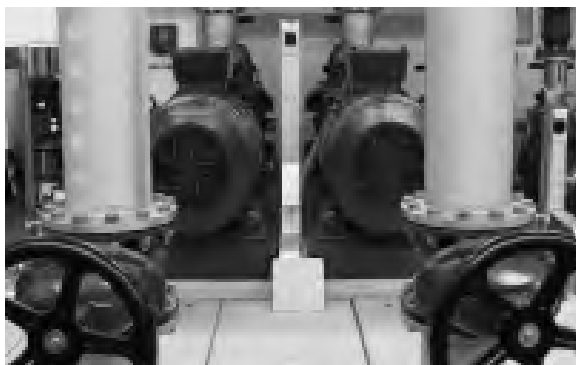
A variety of cable and connector options are offered for permanent or walkaround applications.

### Cable types

- Twisted pair, shielded
- Coaxial
- Low-noise coaxial
- Multi-conductor
- Underwater
- Data collector

### Connectors

- Coaxial plug
- BNC
- MIL-5015 style
- M12 style



## Accessories

### Instrumentation

- Handheld meters
- Portable vibration reference sources
- Power supplies and signal conditioners
- Electromagnetic shakers
- Transmitters and alarm modules

### Mounting hardware

- Magnetic bases
- Isolators
- Fin mounts
- Triaxial cubes
- Adaptor studs
- Adhesives and greases

