

## Portable vibration reference source

The ReferenceMate handheld shaker quickly and easily checks operation and set-up of accelerometers and velocity sensors in the field.

### Confidence in your measurements

Wilcoxon's portable vibration reference source makes it easy to verify sensor performance and the integrity of cable connections between the sensor and data acquisition system. Have confidence in your entire measurement chain before beginning expensive tests and calibration.

### No conversions, no calculations

Check acceleration and velocity measurements with no imperial-metric conversions – no extra steps and no calculations. Frequency and measurement type (peak or RMS) can be selected at the push of a button.

- 61.4 Hz for imperial measurements: 1 g (acceleration) equivalent to 1 in/second (velocity)
- 100 Hz to simulate standard calibration conditions
- 159.2 Hz for metric measurements: 9.81 m/sec<sup>2</sup> (acceleration) equivalent to 9.81 mm/sec (velocity)

### Rugged and portable

ReferenceMate can be easily attached to belt loops or tool belts with top-mounted keyring and carabiner. A carrying case with shoulder strap organizes accessories for easy transport. Battery life of up to 40 continuous hours allows extensive tests. Downtime is eliminated with a DC-power option.

### Reliable performance

Trust is a critical component of any reference source. ReferenceMate is designed with multiple features that ensure accurate readings and proper operation. LED indicators activate if battery levels are low or if the unit is overloaded. A built-in reference accelerometer maintains a 1 g test level for sensors weighing up to 250 grams. Test points are provided to verify the calibration of the internal sensor.

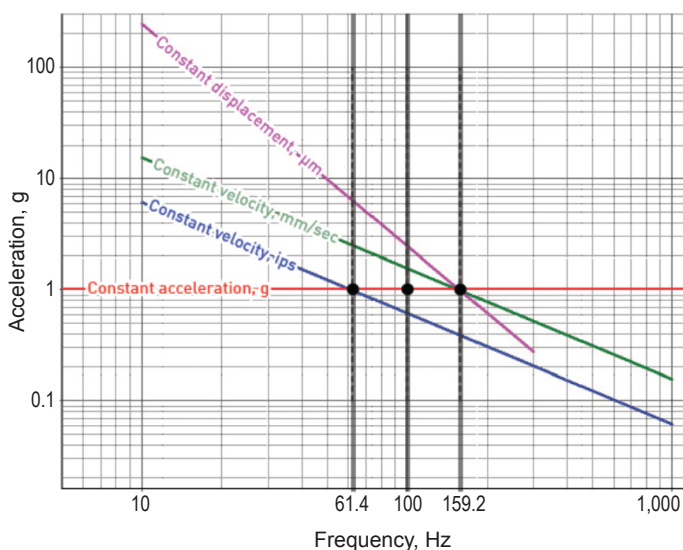
### Kits for every application

ReferenceMate kitted systems include common mounting accessories for a variety of applications. The REF2510 kit includes the commonly used 1/4-28 to 1/4-28 mounting stud for monitoring industrial manufacturing equipment and rotating machinery.

The REF2520 kit includes additional mounting adaptors for test and measurement users involved with applications such as general laboratory vibration, automotive, research, component reliability, and consumer electronics.

Universal accessory kits include adaptors for metric applications or compatibility with Wilcoxon's triaxial accelerometers.

Relationship of velocity and displacement to acceleration



### Contact us

- +1 (301) 330 8811
- info@wilcoxon.com
- www.wilcoxon.com